

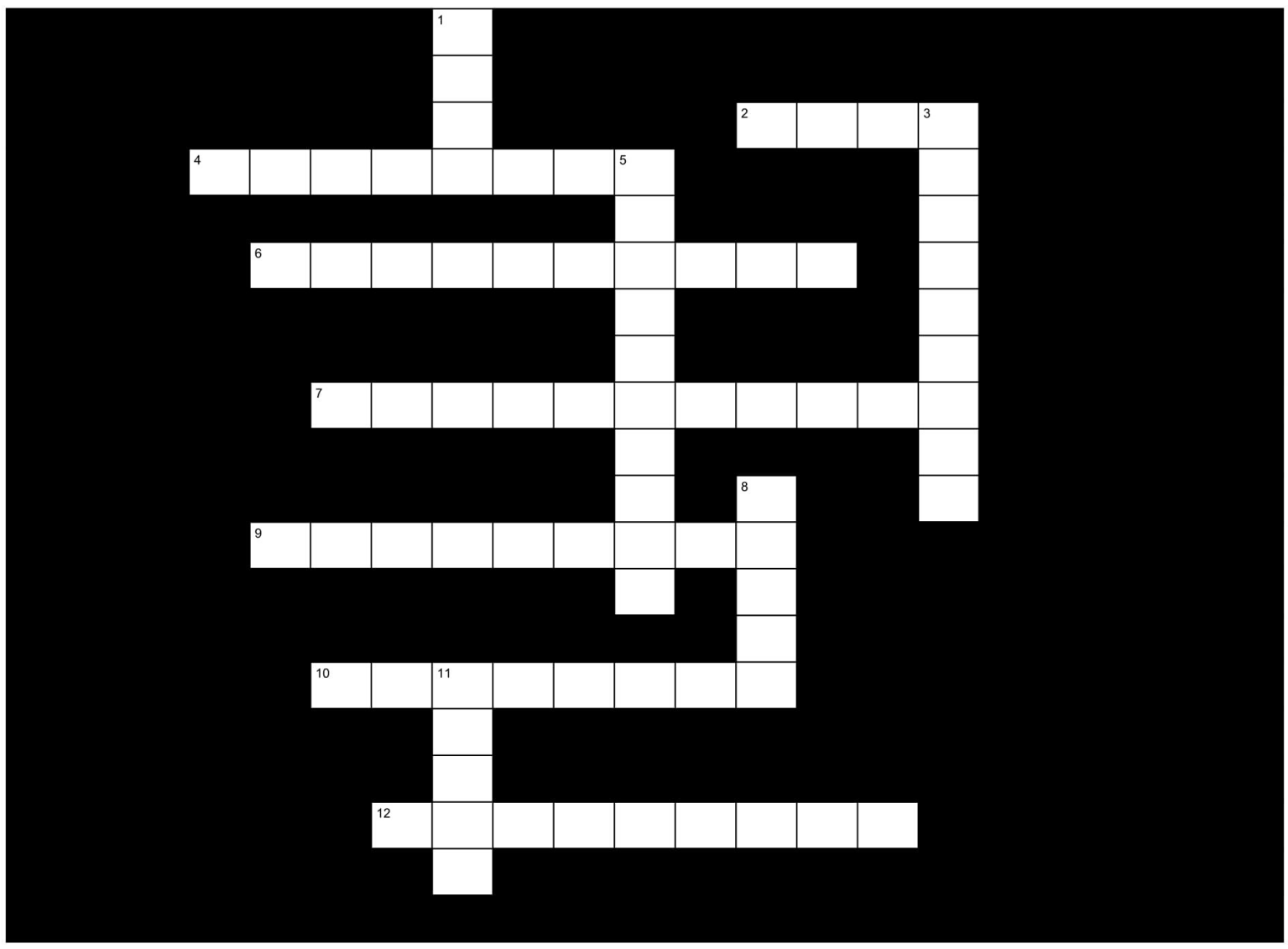
VOCABULARY 1A.2

CROSSWORD

NAME: _____

DATE: _____

SCORE: _____



Across

Down

- 2. Lowers a note by 1/2 step
- 4. Two beats of silence
- 6. Gradually get quieter
- 7. One beat of silence
- 9. Four beats, or a complete bar, of silence
- 10. Symbol used to locate F below Middle C on the staff.
- 12. Gradually get louder

- 1. Play Legato, or smoothly connected
- 3. Connects two of the same note meaning to pay for the combined value of both notes
- 5. Symbol used to locate the G above Middle C on the staff
- 8. Five lines and four spaces music is written on
- 11. Raises a note by 1/2 step

VOCABULARY 1A.2

MATCHING SYMBOLS

NAME: _____

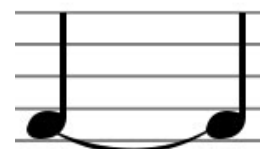
DATE: _____

SCORE: _____



Staff

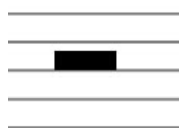
Bass Clef



Treble Clef



Slur



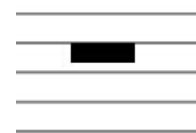
Tied Notes



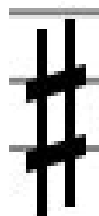
Quarter Rest



Whole Rest



Half Rest



Sharp



Flat



Crescendo



Diminuendo

VOCABULARY 1A.2

MATCHING DEFINITIONS

NAME:

DATE:

SCORE:

Staff *	Symbol used to located the G above middle C on a staff
Bass Clef *	5 lines and 4 spaces music is written on
Treble Clef *	gradually get louder
Slur *	lowers a note by 1/2 step
Tied Notes *	2 beats of silence
Quarter Rest *	Symbol used to locate the F below the middle C on a staff
Whole Rest *	play legato, or smoothly connected
Half Rest *	raises a note for 1/2 step
Sharp *	1 beat of silence
Flat *	gradually get quieter
Crescendo *	connects two of the same note meaning to play for the combined value of both notes
Diminuendo *	4 beats, or a complete bar, of silence

VOCABULARY 1A.2

WORD SEARCH

NAME:

DATE:

SCORE:

R	X	Q	X	M	L	Z	L	W	K	K	J	H	J	G	F	T	H	D	S	G
C	V	Z	B	Q	N	T	S	E	R	E	L	O	H	W	M	L	K	Y	D	A
W	G	E	U	F	T	J	W	Y	R	Q	A	S	D	R	F	G	U	H	J	E
I	O	A	E	P	S	D	A	K	S	D	B	Q	F	F	C	G	H	K	V	P
Q	J	K	G	L	M	E	P	S	E	N	B	V	L	W	C	Z	X	Z	L	S
H	H	G	F	D	H	A	S	P	A	Q	C	R	E	S	C	E	N	D	O	O
O	I	T	C	Y	H	A	L	F	R	E	S	T	W	U	T	O	E	R	W	D
P	J	M	F	N	B	C	O	X	Z	U	A	I	S	O	Y	D	F	G	P	I
K	O	P	L	Q	U	A	R	T	E	R	R	E	S	T	K	J	F	T	H	F
O	I	D	L	D	Y	Z	T	X	R	E	E	W	Q	A	I	S	R	N	A	U
V	I	O	N	P	L	S	N	K	C	M	C	I	V	J	H	G	B	F	D	F
U	Y	T	R	E	E	W	Q	X	A	S	D	F	S	H	A	R	P	G	F	E
X	V	C	V	B	U	N	M	L	K	S	U	J	T	A	L	F	O	E	H	L
Z	J	A	W	S	X	N	E	D	L	C	R	Z	F	V	T	G	L	B	Y	C
B	Q	P	L	O	I	K	I	U	M	J	U	Y	J	L	M	C	N	P	H	S
A	Z	U	X	I	S	W	R	M	E	V	K	A	B	D	E	C	V	F	S	S
J	M	L	P	O	I	K	M	J	I	U	Y	H	N	L	B	G	T	T	R	A
Y	W	H	A	T	G	W	V	R	T	D	Y	H	B	J	D	E	A	C	M	B
P	V	C	W	S	U	Y	B	N	P	L	K	E	J	T	K	F	H	G	Q	Y
N	O	I	M	U	G	Y	T	R	E	W	R	Q	A	S	F	D	W	F	G	T
N	L	R	K	W	J	H	X	S	E	T	O	N	D	E	I	T	E	N	R	M

Word List

Bass Clef
Crescendo
Diminuendo
Half Rest

Flat
Quarter Rest
Sharp
Slur
Staff

Tied Notes
Whole Rest